

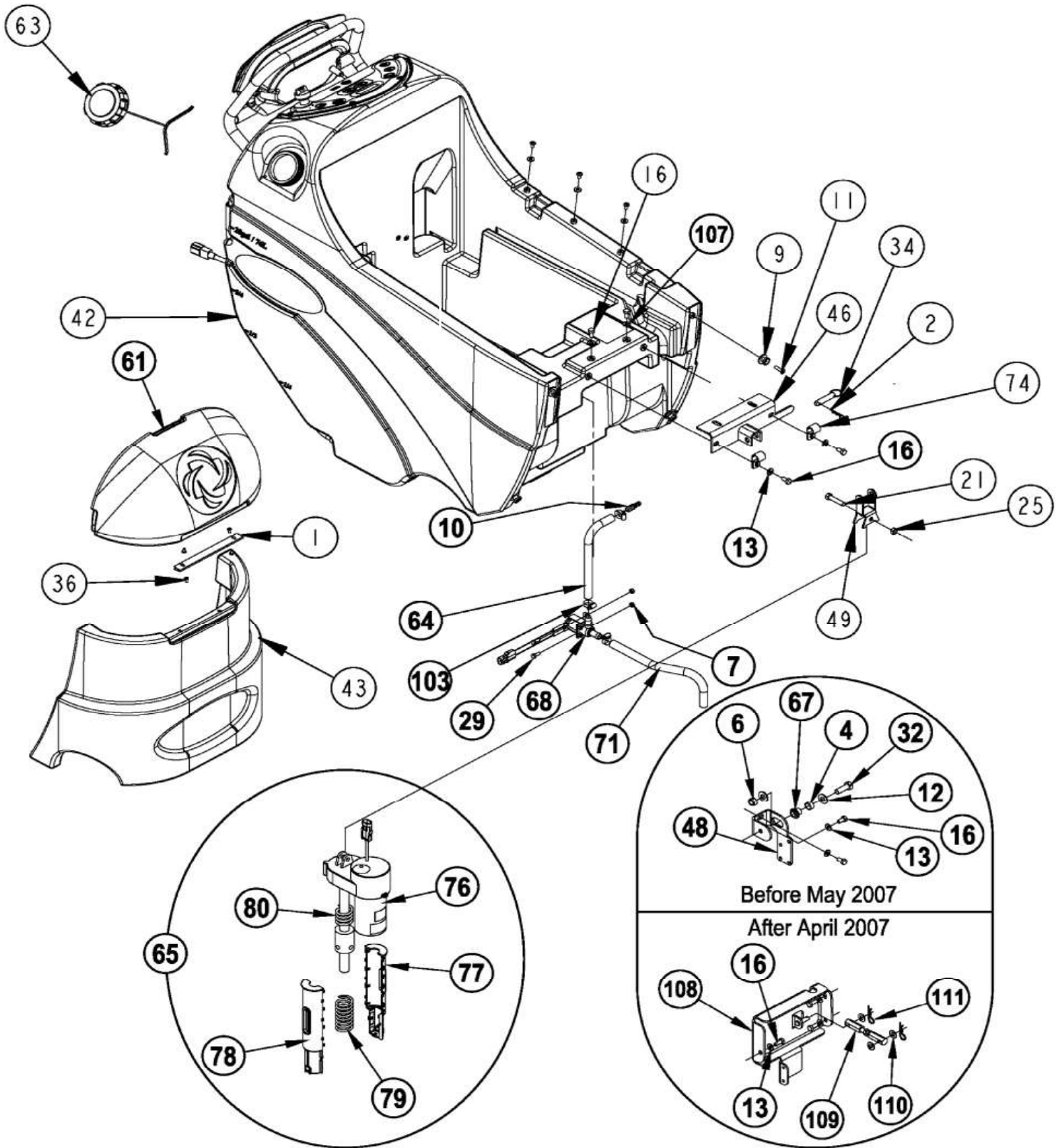
Solution system / electrical-1

BA 625/ BA 725/ BA 825

22-04-2010

Part List ID
E203117

22



Wiring diagram - before September 2009

BA 625/ BA 725/ BA 825

22-04-2010

Part List ID
E203125

35

Pos	Part no.	Qty	Description		EAN
M3	56315061	1	MOTOR 24VDC .5HP 1800RPM	CYLINDRICAL	
M3	56315376	4	BRUSH ASSEMBLY	NOT SHOWN	
M3	56397138	4	BRUSH SPRING	NOT SHOWN	
M3	56412287	1	MOTOR BRUSH/SPRING KIT		
M4	56380529	1	CARBON BRUSH/SET OF 2	for 56412300 - NOTE 3	
M4	56397098	1	CARBON BRUSH SET	for 56412300 - NOTE 3	
M4	56412300	1	VAC MOTOR ASSY.		
M5	56388520	1	NUT PLASTIC		
M5	56393303	1	ACTUATOR		
M8	56315108	1	PUMP 24V		
R1	56397029	1	POTENTIOMETER 5K		
R2	56396197	1	POTENTIOMETER 100K		
S1		1	NOTE COMMENT	PART OF M7 - NOT AVAILABLE	5701715456
S2		1	NOTE COMMENT	PART OF M8 - NOT AVAILABLE	5701715456
S3	56303526	1	KEY REPLACEMENT SET OF 2	NOT SHOWN	
S3	56303553	1	KEY SWITCH ASSEMBLY		
S4	56315096	1	SWITCH FLOAT		
S5	56315096	1	SWITCH FLOAT	(OPTIONAL / RECYCLE START)	
S6	56315096	1	SWITCH FLOAT	(OPTIONAL / RECYCLE STOP)	
BT1		4	NOTE COMMENT	BATTERY - NOT AVAILABLE	5701715456
M10	56315241	1	PUMP CHEMICAL	(OPTIONAL)	

NOTE 1: Order this control panel assy if you have the OLD PUMP voltage reading across the solution pump (M8) leads.

NOTE 2: Order this control panel assy if you have the NEW PUMP voltage reading across the solution pump (M8) leads.

Regular Scrub: Voltage:

Old Pump 7

New Pump 9.56

Heavy Scrub:

Old Pump 11.3

New Pump 13.7

Extreme Scrub:

Old Pump 17

New Pump 19.24

NOTE 3: If your vacuum motor has a serial tag from Lamb Electric (Ametek) order Carbon Brush Set 56397098.

If your vacuum motor has a serial tag from Nilfisk-Advance order Carbon Brush Set 56380529.