



Models: T5

Potentiometer Service Kit



This kit includes the necessary parts to replace a defective control console potentiometer.
Kit installation to be performed by TennantTrue® service or an authorized Tennant service provider.

INSTALLATION INSTRUCTIONS:

Installation Time: 1 hour

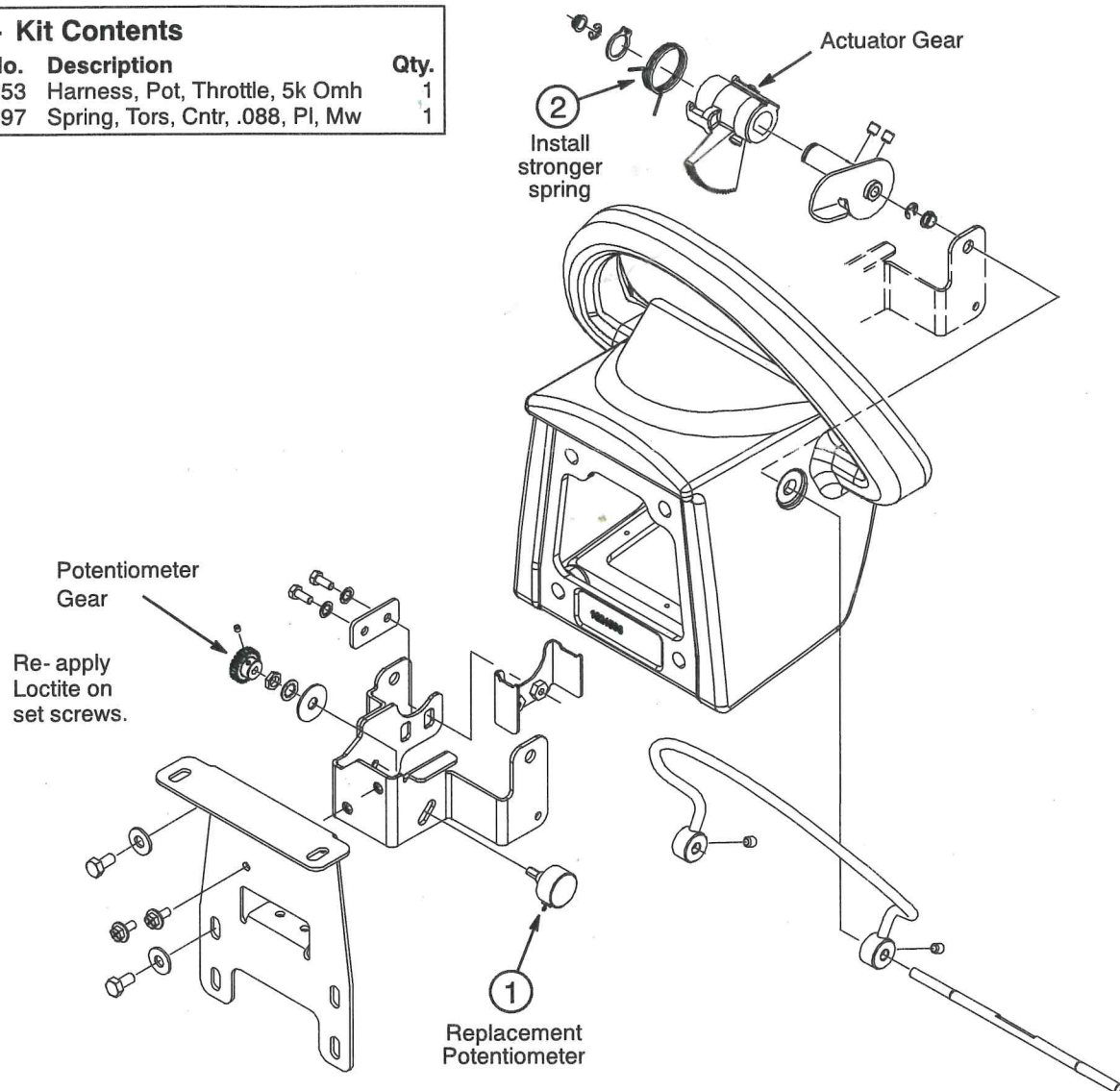
Special Tools Required: None

FOR SAFETY: Before servicing machine, stop on level surface, turn off machine, remove key and disconnect battery cables.

IMPORTANT INSTALLATION NOTICE: Due to a design change, the new replacement potentiometer requires additional spring force to ensure safe and proper machine operation. Carefully install stronger spring provided with kit as shown below.

902226 - Kit Contents

Item	Part No.	Description	Qty.
1	1021853	Harness, Pot, Throttle, 5k Omh	1
2	1262897	Spring, Tors, Cntr, .088, Pl, Mw	1



Set Potentiometer: Ohmmeter required.

Measure full range and divide reading by two to locate mid point. Reading should be $5.0k\Omega (\pm .5k\Omega)$
(Mid point example: $5.0k\Omega \div 2 = 2.5k\Omega$)

Set the potentiometer to the mid point position.

Leave a little play in the potentiometer gear so it does not bind with the actuator gear.

After installing kit test machine for proper operation.